

\$459,900 - 6870 Evans Wynd, Edmonton

MLS® #E4437940

\$459,900

3 Bedroom, 2.50 Bathroom, 1,549 sqft

Single Family on 0.00 Acres

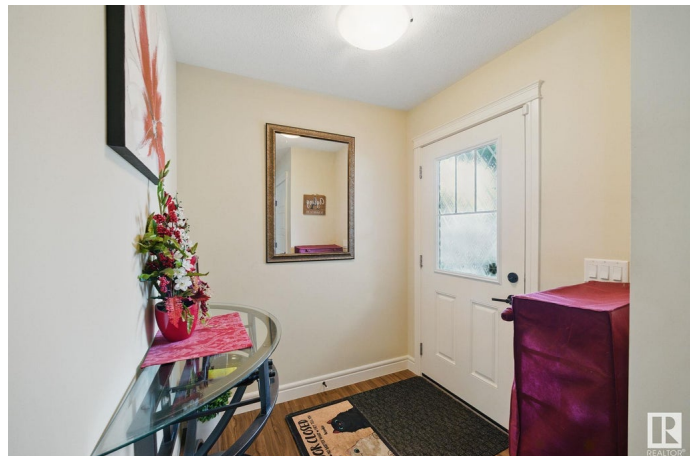
Edgemont (Edmonton), Edmonton, AB

Duplex in the Hamptons! No condo fees! This beautiful 3 bedroom, 2.1 bathrooms, features an open plan design with a large living room, well appointed open kitchen with well made cabinetry, granite countertop, stainless steel appliances, a center island and a walkthrough pantry leading to the double garage. Up the stairs are generous sized bedrooms, a main bath and a full sized ensuite. The basement offers the opportunity to develop any way you wish. The highlight of this house is the back yard that includes a patio area with 2 gazebos, a large shed, a fire pit and a tastefully designed garden which creates a peaceful haven. A lot of love has gone into this home and now it can be yours!

Built in 2018

Essential Information

MLS® #	E4437940
Price	\$459,900
Bedrooms	3
Bathrooms	2.50
Full Baths	2
Half Baths	1
Square Footage	1,549
Acres	0.00
Year Built	2018



Type	Single Family
Sub-Type	Half Duplex
Style	2 Storey
Status	Active

Community Information

Address	6870 Evans Wynd
Area	Edmonton
Subdivision	Edgemont (Edmonton)
City	Edmonton
County	ALBERTA
Province	AB
Postal Code	T6M 0T8

Amenities

Amenities	Deck, Fire Pit, Gazebo
Parking Spaces	4
Parking	Double Garage Attached

Interior

Interior Features	ensuite bathroom
Appliances	Dishwasher-Built-In, Dryer, Fan-Ceiling, Freezer, Garage Control, Garage Opener, Garburator, Microwave Hood Fan, Refrigerator, Storage Shed, Stove-Electric, Washer, Window Coverings
Heating	Forced Air-1, Natural Gas
Fireplace	Yes
Fireplaces	Mantel
Stories	2
Has Basement	Yes
Basement	Full, Unfinished

Exterior

Exterior	Wood, Stone, Vinyl
Exterior Features	Fenced, Landscaped, Playground Nearby, Public Transportation, Schools, Shopping Nearby
Roof	Asphalt Shingles
Construction	Wood, Stone, Vinyl
Foundation	Concrete Perimeter

Additional Information

Date Listed May 22nd, 2025

Days on Market 27

Zoning Zone 57

DATA IS DEEMED RELIABLE BUT IS NOT GUARANTEED ACCURATE BY THE REALTORS® ASSOCIATION OF EDMONTON. COPYRIGHT 2025 BY THE REALTORS® ASSOCIATION OF EDMONTON. ALL RIGHTS RESERVED. Trademarks are owned or controlled by the Canadian Real Estate Association (CREA) and identify real estate professionals who are members of CREA (REALTOR®, REALTORS®) and/or the quality of services they provide (MLS®, Multiple Listing Service®)

Listing information last updated on June 18th, 2025 at 12:17am MDT